



EU PRICES of COW's RAW MILK in EURO/100 kg

Source: Regulation (EU) No 2017/1185 Article 12(a) - Annex II.4(a) (prices of raw milk at real fat and protein content paid to milk producers)

																									Weighted averages			% compared to previous month (*)						
	Belgium	Bulgaria	Czech Rep.	Denmark	Germany	Estonia	Ireland	Greece	Spain	France	Croatia	Italy	Cyprus	Latvia	Lithuania	Luxembourg	Hungary	Malta	Netherlands	Austria	Poland	Portugal	Romania	Slovenia	Slovakia	Finland	Sweden			U.K.	EU-15	EU-13	EU (weight. avg.)	
2017m07	34.32	29.31	31.54	36.58	35.89	32.78	34.96	38.02	30.10	34.04	30.67	36.78	55.30	29.81	27.74	33.63	29.88	46.73	37.25	36.76	31.61	28.47	26.66	29.85	30.49	37.50	36.59	30.53	34.70	31.00	34.17	+ 3.1%	Jul-17	
2017m08	36.06	29.84	32.08	37.51	37.44	32.94	37.68	38.83	30.68	35.11	29.95	37.15	55.96	30.05	28.65	35.02	30.47	50.85	38.50	37.70	32.57	29.85	26.91	30.56	30.91	37.66	37.99	30.97	35.83	31.72	35.25	+ 3.1%	Aug-17	
2017m09	37.70	30.60	33.08	38.44	39.39	33.97	40.79	39.34	31.26	36.60	30.84	37.70	66.58	31.79	31.49	37.27	31.17	53.35	40.50	39.74	33.71	30.77	29.46	32.38	31.97	38.22	40.20	32.82	37.46	33.01	36.83	+ 4.5%	Sep-17	
2017m10	37.51	31.27	34.37	39.23	40.34	34.40	41.95	40.04	31.84	36.17	32.24	37.68	57.14	32.69	33.99	38.18	31.93	53.12	41.75	40.99	34.46	31.39	31.37	32.95	33.06	38.88	40.87	34.52	38.11	34.02	37.53	+ 1.9%	Oct-17	
2017m11	37.01	31.84	35.33	39.24	40.52	34.17	41.86	40.60	32.52	36.40	32.34	38.02	56.77	32.73	33.20	38.69	32.32	51.17	41.75	41.44	35.80	32.01	31.29	33.22	33.61	38.96	40.25	34.92	38.30	34.80	37.80	+ 0.7%	Nov-17	
2017m12	35.67	32.29	35.40	37.89	39.96	33.17	40.59	40.74	32.43	36.01	33.12	38.08	55.96	32.59	32.23	38.49	32.45	49.16	41.50	41.81	36.07	32.30	31.97	32.97	33.97	38.78	40.05	34.79	37.90	34.91	37.48	- 0.9%	Dec-17	
2018m01	31.59	31.99	34.48	35.86	36.76	31.86	39.43	40.48	31.94	35.27	33.21	36.57	55.69	30.72	30.76	34.89	32.13	46.97	37.50	40.27	34.02	31.16	32.11	31.10	33.71	39.22	37.56	33.35	35.90	33.51	35.56	- 5.1%	Jan-18	
2018m02	31.37	30.77	33.82	33.44	34.88	30.24	37.00	40.37	31.94	35.04	33.40	35.98	54.92	28.18	29.38	33.56	31.52	46.72	35.75	38.18	32.95	31.39	31.94	29.88	33.02	39.27	35.77	32.31	34.73	32.51	34.41	- 3.2%	Feb-18	
2018m03	31.01	30.03	32.82	33.29	34.21	29.97	33.31	39.98	31.46	33.85	33.08	35.81	54.09	27.48	28.72	31.98	30.74	46.35	35.50	36.96	32.41	30.18	30.70	29.22	32.42	39.32	33.46	31.32	33.85	31.85	33.57	- 2.5%	Mar-18	
2018m04	30.17	29.12	32.05	33.30	32.99	29.64	31.08	39.40	30.87	32.90	32.33	35.24	54.02	26.93	26.83	30.81	29.91	46.79	34.50	35.81	31.96	30.99	29.68	28.58	31.35	39.04	32.32	30.51	32.91	31.17	32.66	- 2.7%	Apr-18	
2018m05	29.58	29.07	31.21	34.23	32.38	29.23	31.17	39.17	30.68	32.43	31.83	34.89	54.37	26.74	25.96	29.88	28.90	49.13	34.00	35.02	30.69	30.36	28.32	28.74	30.65	36.41	31.68	29.63	32.41	30.19	32.09	- 1.7%	May-18	
2018m06	30.44	29.04	30.78	36.25	32.56	29.65	31.66	39.51	30.39	32.63	31.60	34.86	55.49	26.98	25.59	30.31	28.07	50.03	34.25	34.55	30.40	30.31	28.21	29.18	30.59	36.10	31.63	30.06	32.66	29.94	32.27	+ 0.6%	Jun-18	
2018m07	30.17	29.36	30.79	37.17	33.19	30.18	31.76	39.53	30.29	33.70	32.16	35.25	56.67	27.65	25.79	31.36	28.04	51.57	35.75	35.33	30.38	30.07	28.45	29.78	30.77	35.86	33.02	31.26	33.42	30.05	32.94	+ 2.1%	Jul-18	
2018m08	31.82	29.38	31.17	37.15	33.83	30.34	33.41	39.59	30.49	34.63	31.65	35.26	56.68	27.97	25.74	32.49	28.33	53.21	35.75	35.12	30.72	29.79	29.00	29.89	30.82	36.00	33.29	33.09	34.12	30.32	33.57	+ 1.9%	Aug-18	
2018m09	33.73	29.72	31.96	37.95	35.43	31.61	37.00	39.83	30.78	35.98	33.00	35.44	56.83	28.95	28.15	34.12	28.69	53.64	37.00	36.45	31.60	30.03	28.82	30.96	31.71	37.60	34.70	34.30	35.44	31.22	34.83	+ 3.8%	Sep-18	
2018m10	35.12	30.30	32.82	37.94	36.63	31.80	38.75	39.61	31.55	36.71	33.84	36.81	56.90	29.34	30.76	36.01	29.57	51.56	38.00	37.86	32.57	31.05	30.52	31.98	32.45	38.87	37.57	34.60	36.44	32.23	35.83	+ 2.9%	Oct-18	
2018m11	35.69	30.43	33.54	37.93	37.16	32.29	39.04	39.25	32.33	36.73	33.69	37.08	57.82	29.65	31.66	36.75	30.29	51.55	37.25	38.68	32.85	31.84	31.62	32.38	32.92	38.74	37.21	34.80	36.63	32.69	36.07	+ 0.6%	Nov-18	
2018m12	35.53	30.83	34.50	36.97	36.47	32.11	36.90	38.74	32.04	36.00	34.34	37.20	58.11	29.99	31.39	36.11	30.78	49.55	37.25	39.20	33.20	31.84	32.01	31.95	33.16	38.57	37.44	32.90	35.96	33.05	35.54	- 1.5%	Dec-18	
2019m01	33.86	30.94	34.66	34.16	35.47	31.71	34.28	38.88	32.04	35.98	33.96	39.51	58.07	30.21	30.61	34.96	31.08	48.22	36.25	38.25	32.48	31.09	31.46	32.56	33.26	38.27	35.96	32.51	35.41	32.68	35.02	- 1.5%	Jan-19	
2019m02	33.71	30.93	34.17	34.17	35.22	32.03	34.38	38.88	32.04	35.91	33.70	39.58	58.16	30.30	30.66	34.16	31.43	46.95	36.50	38.02	32.23	31.71	31.37	32.18	33.03	37.96	35.17	32.52	35.36	32.51	34.94	- 0.2%	Feb-19	
2019m03	33.59	30.76	34.21	34.17	34.81	31.57	32.63	38.29	31.65	33.54	33.33	39.32	57.89	30.34	30.56	34.44	31.48	46.71	36.50	37.64	32.39	30.55	31.04	32.27	32.78	37.60	35.04	32.76	34.66	32.54	34.35	- 1.7%	Mar-19	
2019m04	32.97	29.96	33.71	34.16	34.49	31.71	31.66	38.23	31.65	35.66	33.26	39.07	57.60	30.26	30.14	34.15	30.87	45.55	36.00	37.84	31.77	30.60	30.22	32.40	32.60	37.56	35.13	31.83	34.73	32.03	34.34	- 0.0%	Apr-19	
2019m05	33.42	29.95	33.19	34.15	34.49	32.00	31.44	38.29	31.65	35.34	33.12	39.07	57.60	29.57	27.56	33.63	30.51	45.55	35.25	37.50	31.54	30.60	30.46	31.82	31.63	37.00	34.28	31.61	34.53	31.59	34.11	- 0.7%	May-19	
2019m06																																		Jun-19

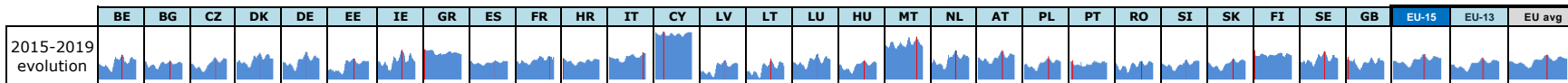
Yellow box: Estimations DG AGRI-G3

Orange box: Estimations based on National statistics

Grey box: "estimated" prices by MS (indicator of price movement, not to be relied upon to forecast prices)

Price of Apr 19 compared to :

	BE	BG	CZ	DK	DE	EE	IE	GR	ES	FR	HR	IT	CY	LV	LT	LU	HU	MT	NL	AT	PL	PT	RO	SI	SK	FI	SE	GB	EU-15	EU-13	EU avg
Mar 19	-1.8%	-2.6%	-1.5%	-0.0%	-0.9%	+0.4%	-3.0%	-0.2%	idem	+6.3%	-0.2%	-0.6%	-0.5%	-0.3%	-1.4%	-0.8%	-1.9%	-2.5%	-1.4%	+0.5%	-1.9%	+0.2%	-2.6%	+0.4%	-0.5%	-0.1%	+0.3%	-2.8%	+0.2%	-1.6%	-0.0%
Apr 18	+9%	+3%	+5%	+3%	+5%	+7%	+2%	-3%	+3%	+8%	+3%	+11%	+7%	+12%	+12%	+11%	+3%	-3%	+4%	+6%	-1%	-1%	+2%	+13%	+4%	-4%	+9%	+4%	+6%	+3%	+5%

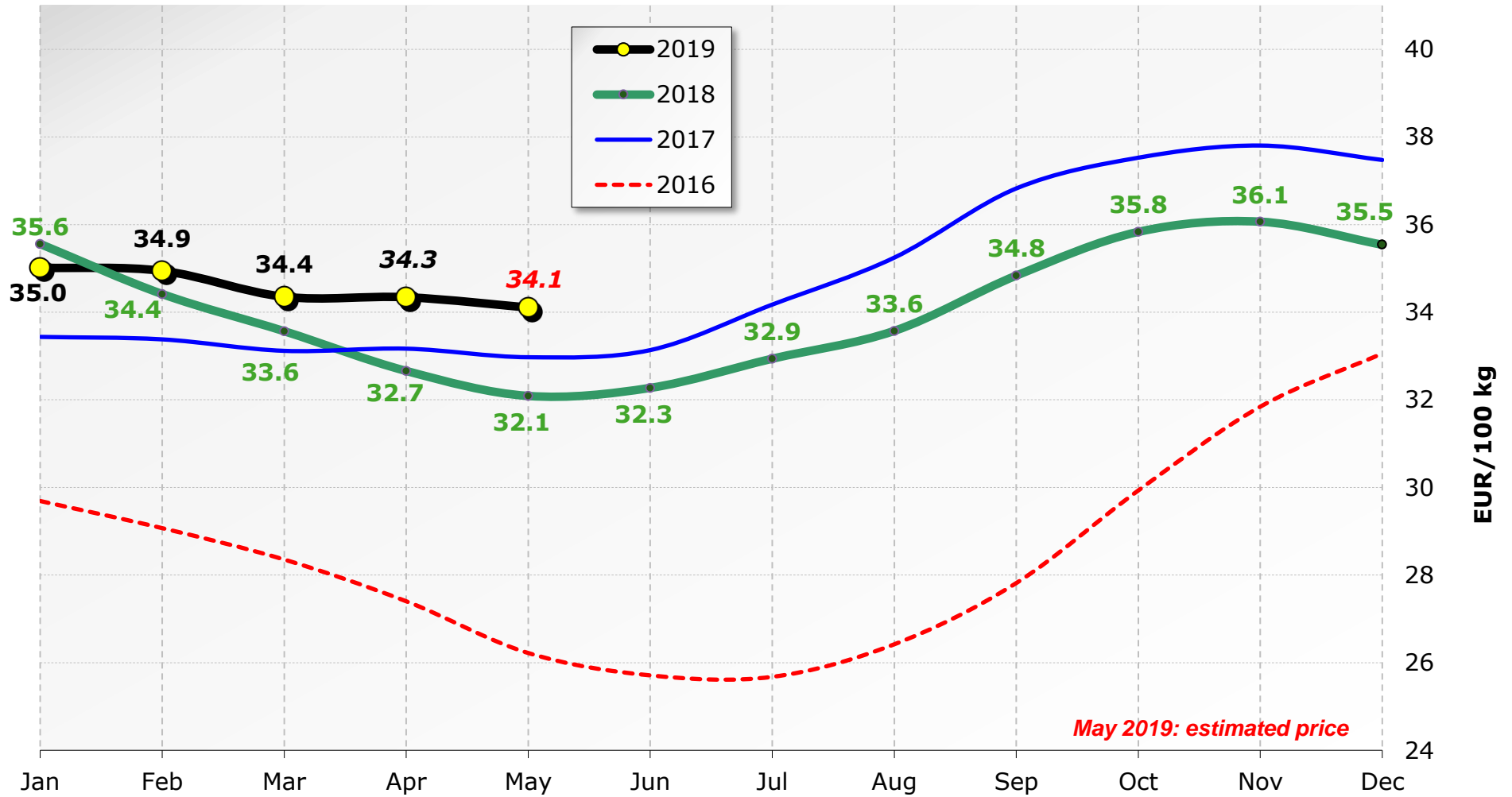


Red lines show maximum values

	BE	BG	CZ	DK	DE	EE	IE	GR	ES	FR	HR	IT	CY	LV	LT	LU	HU	MT	NL	AT	PL	PT	RO	SI	SK	FI	SE	GB	EU-15	EU-13	EU avg
Max since Jan 2015	37.7	32.3	35.4	39.2	40.5	34.4	42.0	42.6	32.5	36.7	34.5	39.7	58.5	32.7	34.0	38.7	32.5	53.6	41.8	41.8	36.1	32.5	32.1	33.2	34.0	41.8	40.9	35.6	38.3	34.9	37.8
	Sep 17	Dec 17	Dec 17	Nov 17	Nov 17	Oct 17	Oct 17	Jan 15	Nov 17	Nov 18	Jan 15	Feb 19	Jan 16	Nov 17	Oct 17	Nov 17	Dec 17	Sep 18	Oct 17	Dec 17	Dec 17	Apr 15	Jan 18	Nov 17	Dec 17	Jan 15	Oct 17	Feb 15	Nov 17	Dec 17	Nov 17
Min since Jan 2015	22.1	24.6	22.0	26.1	23.2	20.0	23.5	37.4	27.8	28.5	27.9	30.5	54.0	17.7	16.9	24.7	21.0	42.9	25.0	29.3	23.1	26.8	21.6	23.2	23.1	35.4	27.2	24.0	26.2	22.5	25.7
	Jul 16	Jun 16	Jul 16	Jul 16	Jun 16	Jul 16	Jun 16	Jun 16	Jul 16	Jul 16	Jul 16	Aug 16	Apr 18	Jul 16	Jun 16	Jul 16	Jul 16	Apr 16	May 16	Jun 16	Jun 16	Aug 16	Jun 16	Jun 16	Jul 16	Jul 16	Jul 16	Jul 16	Jul 16	Jun 16	Jul 16

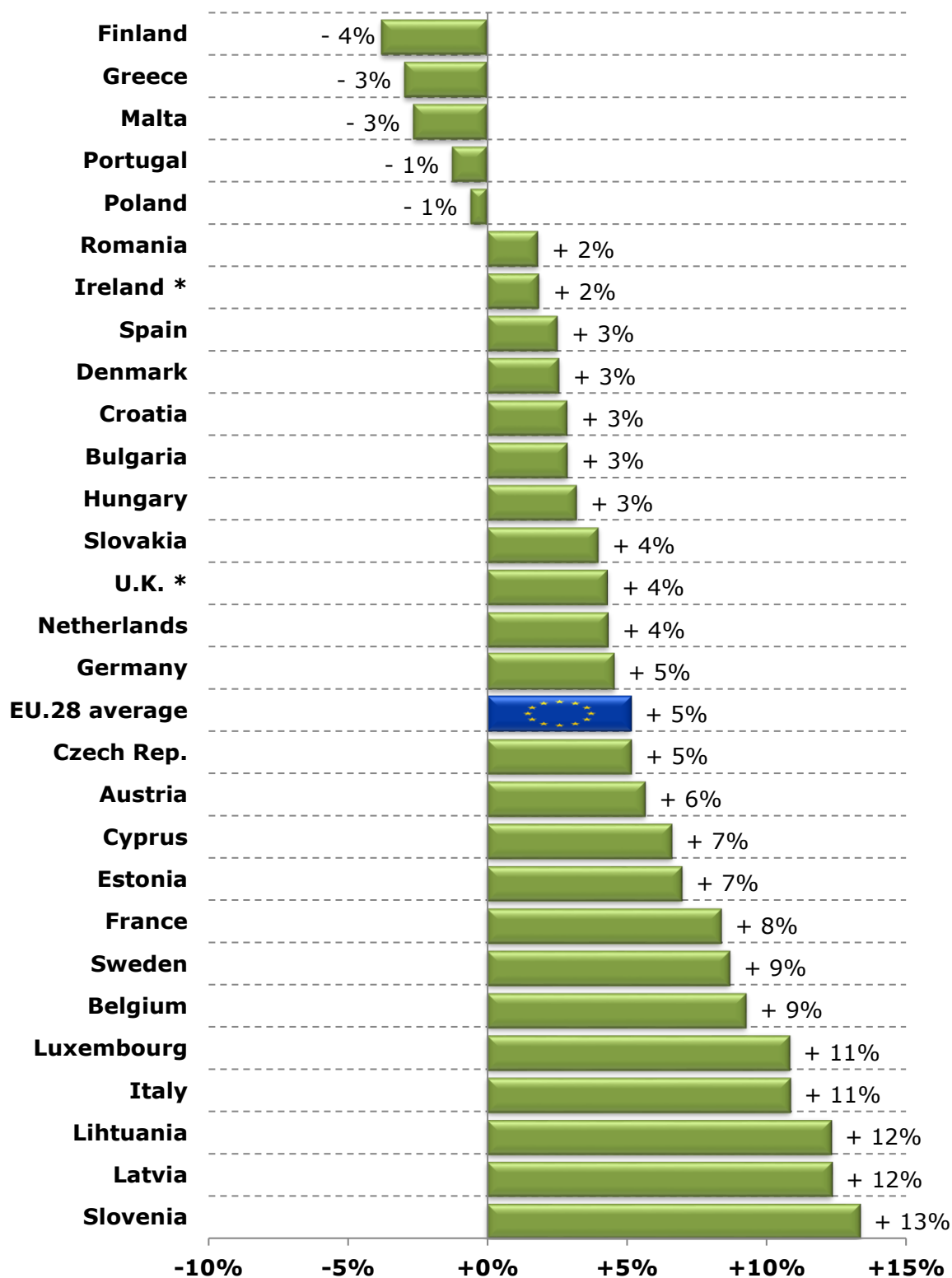
Milk Prices paid to the Producers

EU (weight. avg.)



Source : Member States Reg. (EU) No 2017/1185 Article 12(a) - Annex II.4(a))

Raw Milk Price evolution in April 2019 compared to April 2018

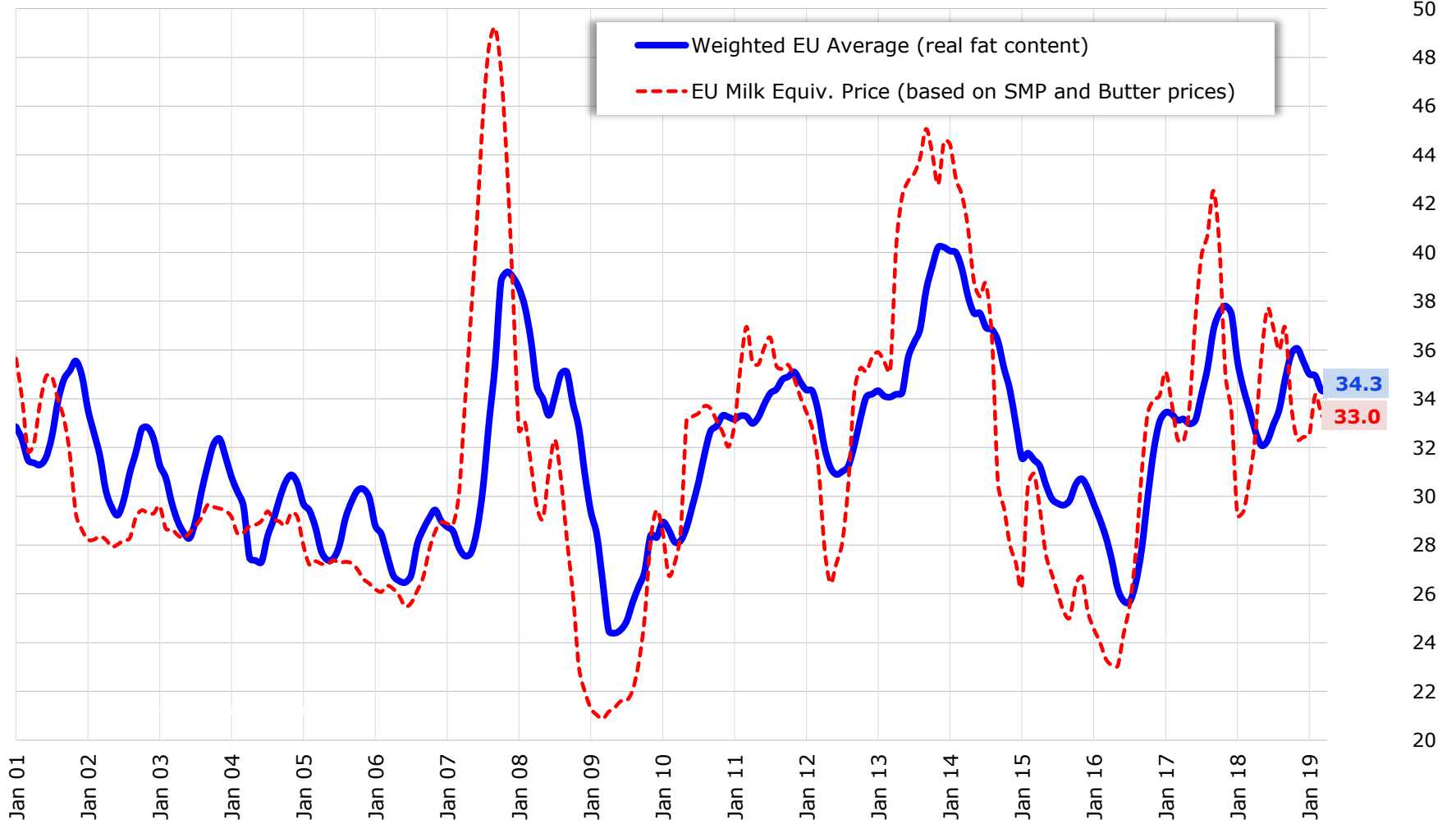


* : estimated figures for Apr 2019

Source : Member States (Reg. (EU) No 2017/1185 Article 12(a) - Annex II.4(a))

EU Raw Milk Prices Evolution (up to April 2019)

EUR/100 kg

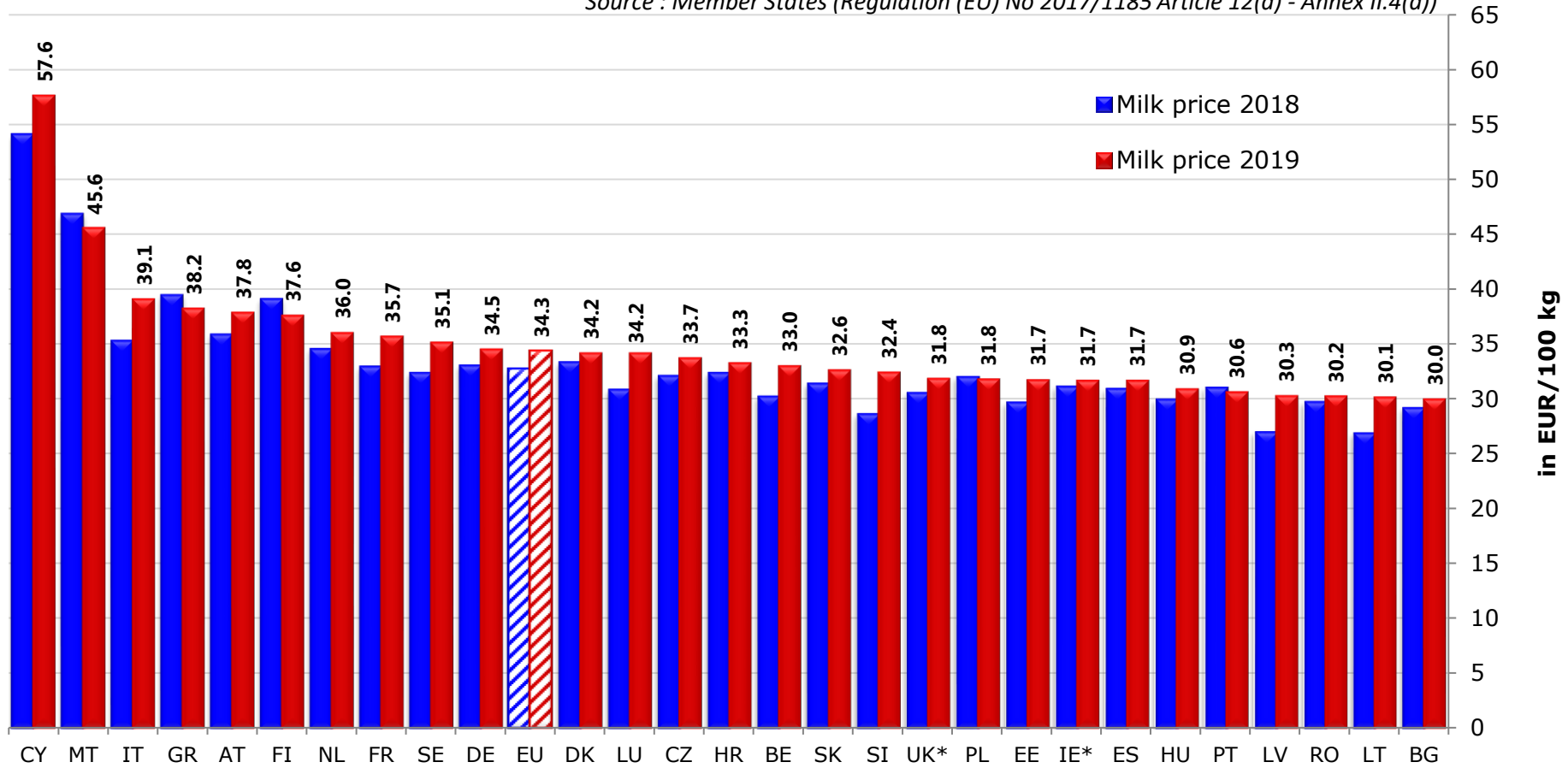


Source : MS' communications under Reg. (EU) No 2017/1185 Article 12(a) - Annex II.4(a)

EU MILK PRICES

(Apr 2019 vs Apr 2018)

Source : Member States (Regulation (EU) No 2017/1185 Article 12(a) - Annex II.4(a))



* : estimated figures for Apr 2019