

EU PRICES of COW's RAW MILK in EURO/100 kg

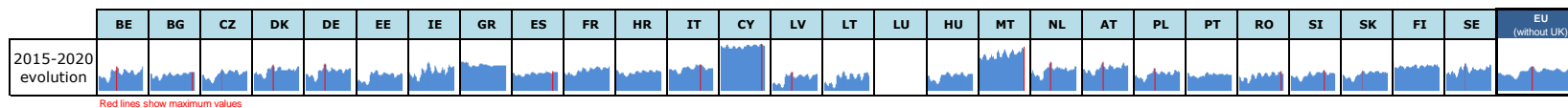
Source: Regulation (EU) No 2017/1185 Article 12(a) - Annex II.4(a) (prices of raw milk at real fat and protein content paid to milk producers)

	Belgium	Bulgaria	Czech Rep.	Denmark	Germany	Estonia	Ireland	Greece	Spain	France	Croatia	Italy	Cyprus	Latvia	Lithuania	Luxembourg	Hungary	Malta	Netherlands	Austria	Poland	Portugal	Romania	Slovenia	Slovakia	Finland	Sweden	EU (without UK)	% EU (without UK) compared to previous month (*)	
2019m01	33.86	30.94	34.66	34.16	35.47	31.71	34.28	38.88	32.04	36.12	33.96	39.51	58.07	30.21	30.61	c	31.08	48.22	36.25	38.25	32.48	31.09	31.46	32.56	33.26	38.60	35.96	35.31	-1.5%	Jan-19
2019m02	33.71	30.93	34.17	34.17	35.22	32.03	34.38	38.88	32.04	36.06	33.70	39.65	58.16	30.30	30.66	c	31.43	46.95	36.50	38.02	32.23	31.71	31.37	32.18	33.03	38.29	35.17	35.23	-0.2%	Feb-19
2019m03	33.59	30.76	34.21	34.17	34.82	31.57	32.63	38.29	31.65	35.03	33.33	39.32	57.89	30.34	30.56	c	31.48	46.71	36.50	37.64	32.39	30.55	31.04	32.27	32.78	37.94	35.04	34.79	-1.3%	Mar-19
2019m04	32.97	29.96	33.71	34.16	34.49	31.71	31.66	38.23	31.65	35.49	33.26	39.07	57.60	30.26	30.14	c	30.87	45.55	36.00	37.84	31.77	30.60	30.22	32.40	32.60	37.85	35.13	34.58	-0.6%	Apr-19
2019m05	32.48	29.72	33.42	34.15	33.99	31.08	31.47	37.86	31.55	35.47	33.28	39.09	57.14	29.35	28.09	c	30.34	45.74	35.25	37.45	31.49	30.25	28.70	32.10	32.61	37.41	34.00	34.23	-1.0%	May-19
2019m06	31.64	29.44	32.99	34.15	33.22	30.47	31.95	38.09	31.17	35.74	32.52	39.09	56.79	28.53	26.43	c	30.08	49.07	35.75	36.33	31.02	30.24	28.29	31.62	32.18	36.96	34.34	34.03	-0.6%	Jun-19
2019m07	31.12	29.66	32.83	34.16	32.93	30.34	31.08	37.93	31.07	35.92	32.44	39.16	57.01	28.44	26.21	c	29.83	50.55	35.00	35.97	30.78	30.17	28.43	31.74	31.99	37.62	34.02	33.82	-0.6%	Jul-19
2019m08	31.50	29.78	32.39	34.18	33.01	30.06	31.95	37.93	31.36	36.75	32.41	39.58	56.92	28.37	26.13	c	30.13	51.60	35.00	35.45	30.12	30.21	28.96	32.02	31.67	37.94	33.37	34.02	+0.6%	Aug-19
2019m09	32.69	30.30	32.56	34.03	33.88	30.30	34.48	38.72	31.65	37.83	32.95	39.69	57.20	28.41	27.52	c	30.24	52.12	35.00	35.97	30.41	30.55	29.77	32.65	32.26	38.69	34.30	34.70	+2.0%	Sep-19
2019m10	33.48	31.02	33.27	34.01	34.65	30.54	36.61	38.21	32.14	37.94	33.65	39.69	57.98	28.68	29.36	c	31.63	52.10	34.75	36.43	31.42	30.80	31.65	33.65	32.68	39.84	35.01	35.23	+1.5%	Oct-19
2019m11	34.15	31.54	33.95	33.99	35.19	30.89	37.29	38.48	33.01	37.77	34.06	39.23	58.33	29.70	30.21	c	31.99	53.78	35.00	36.95	32.85	30.83	32.68	34.05	33.03	39.74	35.46	35.64	+1.2%	Nov-19
2019m12	35.36	31.75	34.25	34.80	35.29	31.32	36.52	38.89	32.82	37.57	34.35	38.70	58.45	30.10	30.62	c	32.64	52.36	36.41	37.31	33.33	30.77	32.98	34.16	33.13	39.02	36.08	35.77	+0.4%	Dec-19
2020m01	34.33	31.96	34.58	34.79	34.92	31.30	34.67	38.82	32.62	37.12	34.44	37.49	58.57	30.21	30.84	c	32.55	49.47	36.50	36.70	32.76	30.85	32.48	33.68	33.23	38.81	35.21	35.30	-1.3%	Jan-20
2020m02	33.82	32.00	34.48	35.74	34.79	31.44	34.86	38.85	32.62	36.74	34.01	37.51	58.52	30.65	31.15	c	31.99	49.06	36.25	37.29	32.54	30.41	32.85	32.97	33.28	38.94	34.90	35.20	-0.3%	Feb-20
2020m03	31.90	32.00	32.03	35.74	34.88	31.42	31.66	38.77	32.33	36.14	33.29	36.61	58.17	30.72	31.09	c	31.08	48.88	35.00	37.20	31.17	30.40	32.33	32.63	33.21	38.98	34.90	34.49	-2.0%	Mar-20
2020m04	30.37	31.33	30.82	34.84	34.05	30.35	30.01	38.76	32.23	35.14	33.03	35.61	57.83	28.53	28.21	c	29.72	49.14	33.00	37.19	29.55	30.42	31.74	30.72	32.89	38.94	34.84	33.42	-3.1%	Apr-20
2020m05	29.81	31.20	29.87	34.86	32.52	28.42	30.59	38.48	31.94	35.45	32.89	36.06	57.51	25.60	25.37	c	29.37	48.99	32.50	36.39	29.40	30.04	29.89	30.00	32.08	38.71	34.52	32.97	-1.4%	May-20
2020m06	29.58	30.98	30.24	34.07	31.72	27.47	31.76	38.51	31.75	34.54	32.63	34.64	57.73	25.50	24.73	c	29.12	50.48	33.00	36.24	29.82	29.92	29.19	30.10	31.84	37.77	34.32	32.55	-1.3%	Jun-20
2020m07	29.56	30.94	30.26	34.11	31.83	27.71	32.83	38.48	31.55	35.38	32.49	34.64	56.82	26.48	25.49	c	28.59	50.18	34.00	36.24	29.84	29.64	29.70	30.16	31.62	37.51	33.87	32.88	+1.0%	Jul-20
2020m08	29.47	31.16	30.74	34.11	32.02	27.58	33.89	38.51	31.55	35.40	32.39	34.56	57.15	26.91	26.16	c	28.83	50.83	33.75	37.26	30.79	29.74	29.73	30.26	31.59	37.83	34.06	33.08	+0.6%	Aug-20
2020m09	30.56	31.16	30.49	34.67	33.25	28.36	36.61	38.56	31.17	36.71	32.84	34.98	56.73	27.55	28.14	c	28.52	51.57	34.25	38.32	31.38	30.24	30.05	30.97	31.75	39.06	35.02	34.01	+2.8%	Sep-20
2020m10	31.68	31.77	30.64	35.61	34.70	28.90	39.14	38.58	32.72	37.77	33.56	35.49	58.00	28.29	30.53	c	29.40	52.48	34.25	39.36	32.51	30.37	32.21	31.68	32.38	39.74	36.25	35.07	+3.1%	Oct-20
2020m11	31.89	32.14	31.99	35.59	35.05	29.50	39.14	38.64	33.11	36.87	33.99	35.82	58.50	28.89	31.52	c	30.27	51.89	35.19	40.07	34.51	30.57	32.50	32.30	32.39	39.89	37.88	35.43	+1.0%	Nov-20
2020m12	32.59	32.47	32.51	33.73	35.11	29.60	37.49	38.88	32.91	37.04	34.43	35.90	58.75	29.54	31.62	c	30.70	51.37	34.25	41.41	34.69	30.68	32.43	31.34	32.38	39.58	37.93	35.29	-0.4%	Dec-20
2021m01	32.87	32.54	32.76	33.74	34.71	29.66	35.64	38.55	33.01	36.94	33.87	35.97	58.67	29.18	31.41	c	30.78	53.03	35.00	39.32	32.91	30.39	32.44	31.95	32.17	38.84	36.68	34.94	-1.0%	Jan-21
2021m02	32.87	32.66	33.17	34.29	34.66	29.92	37.20	38.67	32.82	36.48	33.75	36.07	58.80	29.64	31.97	c	30.93	51.46	35.00	39.04	33.00	29.97	32.70	31.65	31.96	38.98	36.77	34.97	+0.1%	Feb-21
2021m03	34.15	32.68	32.86	35.91	35.58	30.47	37.10	38.86	32.72	35.89	33.79	36.00	58.18	29.97	32.18	c	30.57	55.71	35.25	38.16	32.84	30.91	33.03	31.57	32.22	39.46	36.79	35.17	+0.6%	Mar-21
2021m04	35.27	32.43	33.25	37.25	35.96	31.08	36.61	38.76	32.62	36.49	33.45	36.00	57.78	30.53	31.92	c	30.98	55.58	36.00	38.12	33.10	30.01	30.76	31.72	32.24	38.64	38.13	35.52	+1.0%	Apr-21
2021m05	35.56	32.44	33.81	37.79	35.86	31.28	37.49	38.72	32.52	36.28	33.19	35.96	57.22	30.41	31.25	c	31.20	54.77	37.50	38.59	33.34	29.95	31.21	31.48	31.99	38.02	39.33	35.72	+0.6%	May-21
2021m06	35.05	32.43	34.03	37.52	35.86	31.04	37.39	38.74	32.23	36.64	32.79	35.96	57.30	30.41	30.12	c	31.16	56.35	38.00	38.21	33.22	29.89	30.28	31.19	31.82	37.27	39.23	35.73	+0.0%	Jun-21
2021m07	37.57	32.52	33.54	37.51	35.86	30.80	37.58	38.62	32.23	37.89	32.89	35.96	57.30	30.65	29.41	c	30.55	56.35	37.50	38.90	32.57	29.89	30.45	31.20	31.48	37.20	38.94	35.92	+0.5%	Jul-21

: Estimations DG AGRI-G3
 : Estimations based on National statistics
 c: confidential
 : "estimated" prices by MS (indicator of price movement, not to be relied upon to forecast prices)

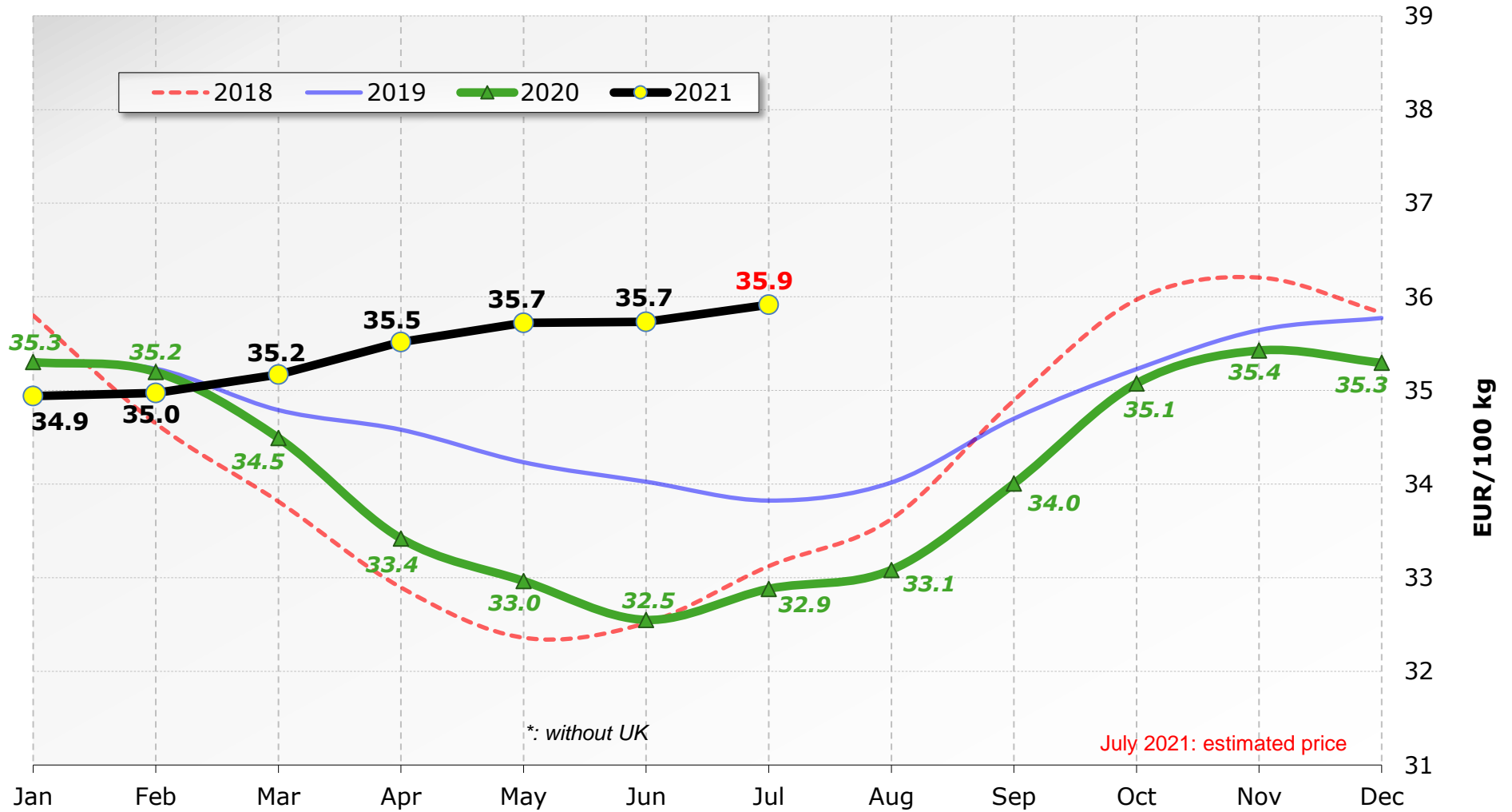
Price of Jun 21 compared to :

	BE	BG	CZ	DK	DE	EE	IE	GR	ES	FR	HR	IT	CY	LV	LT	LU	HU	MT	NL	AT	PL	PT	RO	SI	SK	FI	SE	EU (without UK)
May 21	-1.4%	-0.0%	+0.7%	-0.7%	idem	-0.8%	-0.3%	+0.1%	-0.9%	+1.0%	-1.2%	idem	+0.1%	idem	-3.6%	-	-0.1%	+2.9%	+1.3%	-1.0%	-0.4%	-0.2%	-3.0%	-0.9%	-0.5%	-2.0%	-0.3%	+0.0%
Jun 20	+18.5%	+4.7%	+12.5%	+10.1%	+13.1%	+13.0%	+17.7%	+0.6%	+1.5%	+6.1%	+0.5%	+3.8%	-0.7%	+19.3%	+21.8%	-	+7.0%	+11.6%	+15.2%	+5.4%	+12.2%	-0.1%	+3.7%	+3.6%	-0.1%	-1.3%	+14.3%	+9.8%



Milk Prices paid to the Producers

EU* (weight. avg.)

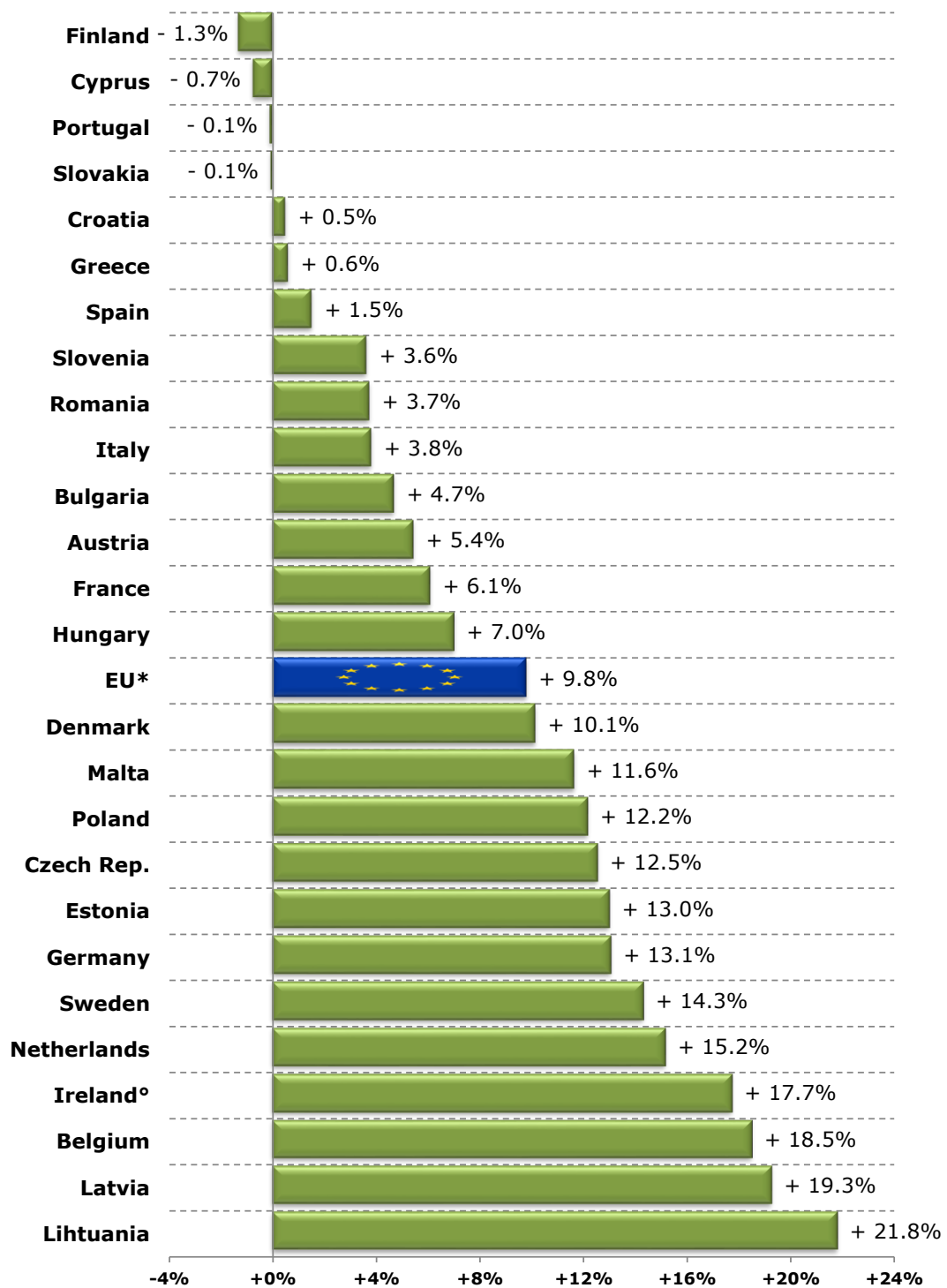


*: without UK

July 2021: estimated price

Source : Member States Reg. (EU) No 2017/1185 Article 12(a) - Annex II.4(a))

Raw Milk Price evolution in June 2021 compared to June 2020

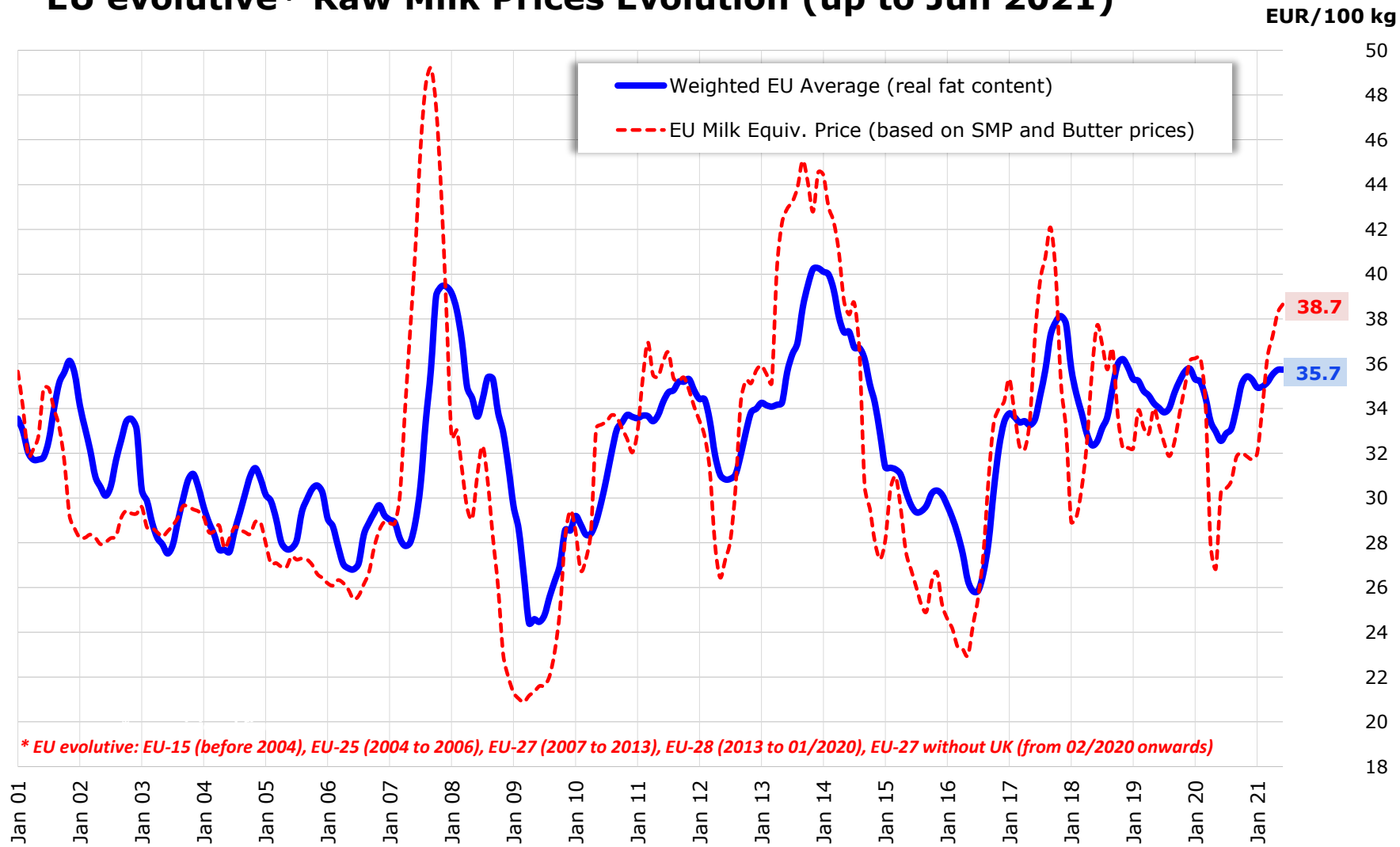


*: without UK

[°]: estimated figures for Jun 2021

Source : Member States (Reg. (EU) No 2017/1185 Article 12(a) - Annex II.4(a))

EU evolutive* Raw Milk Prices Evolution (up to Jun 2021)

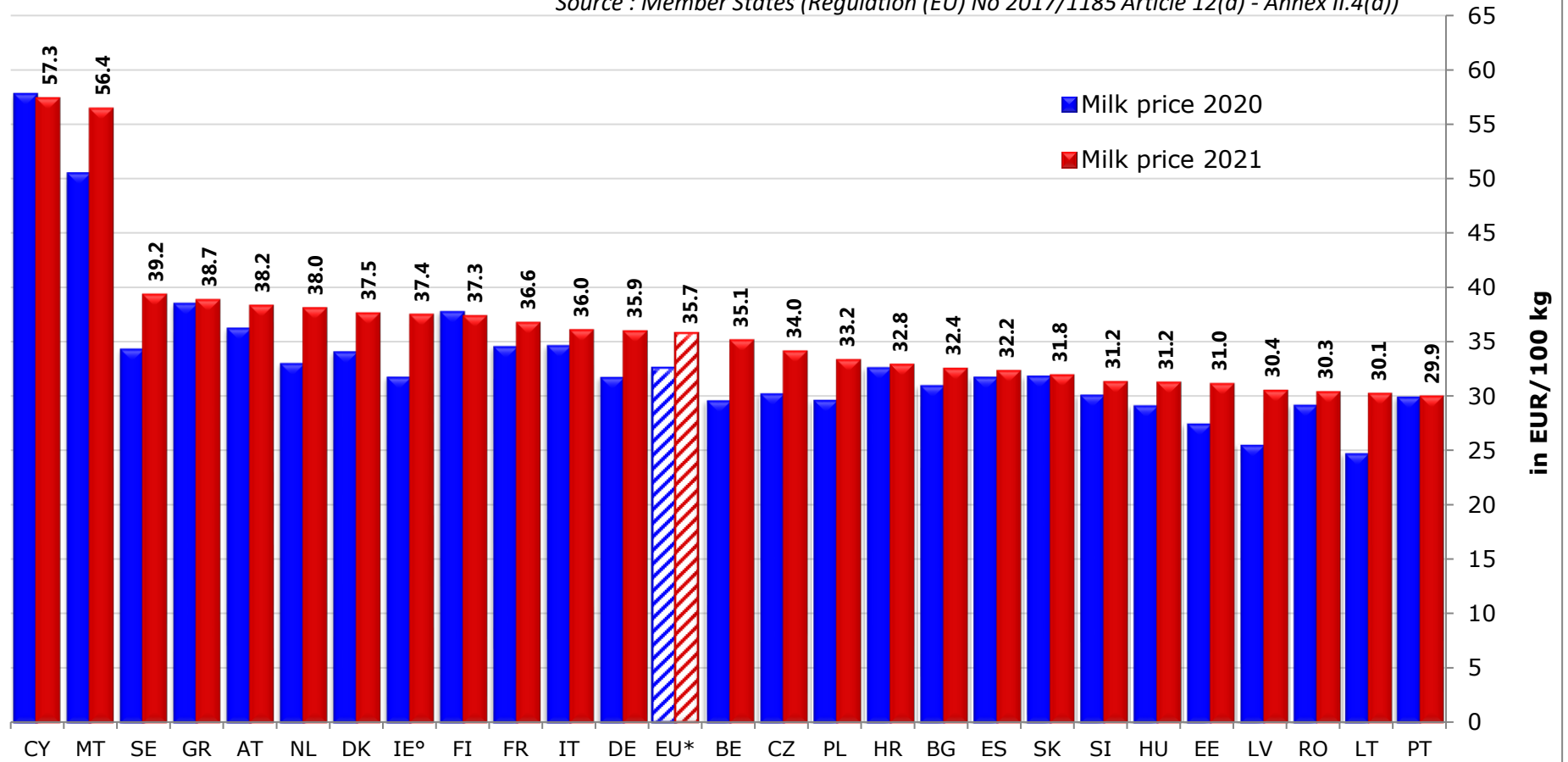


Source : MS' communications under Reg. (EU) No 2017/1185 Article 12(a) - Annex II.4(a)

EU MILK PRICES

(Jun 2021 vs Jun 2020)

Source : Member States (Regulation (EU) No 2017/1185 Article 12(a) - Annex II.4(a))



[°] : estimated figures for Jun 2021

EU Organic cow's milk prices

June 2021

Source : Member States (Regulation (EU) No 2017/1185 Article 12(a) - Annex II.4(a))

